

ANEXO IV – AMOSTRAGEM

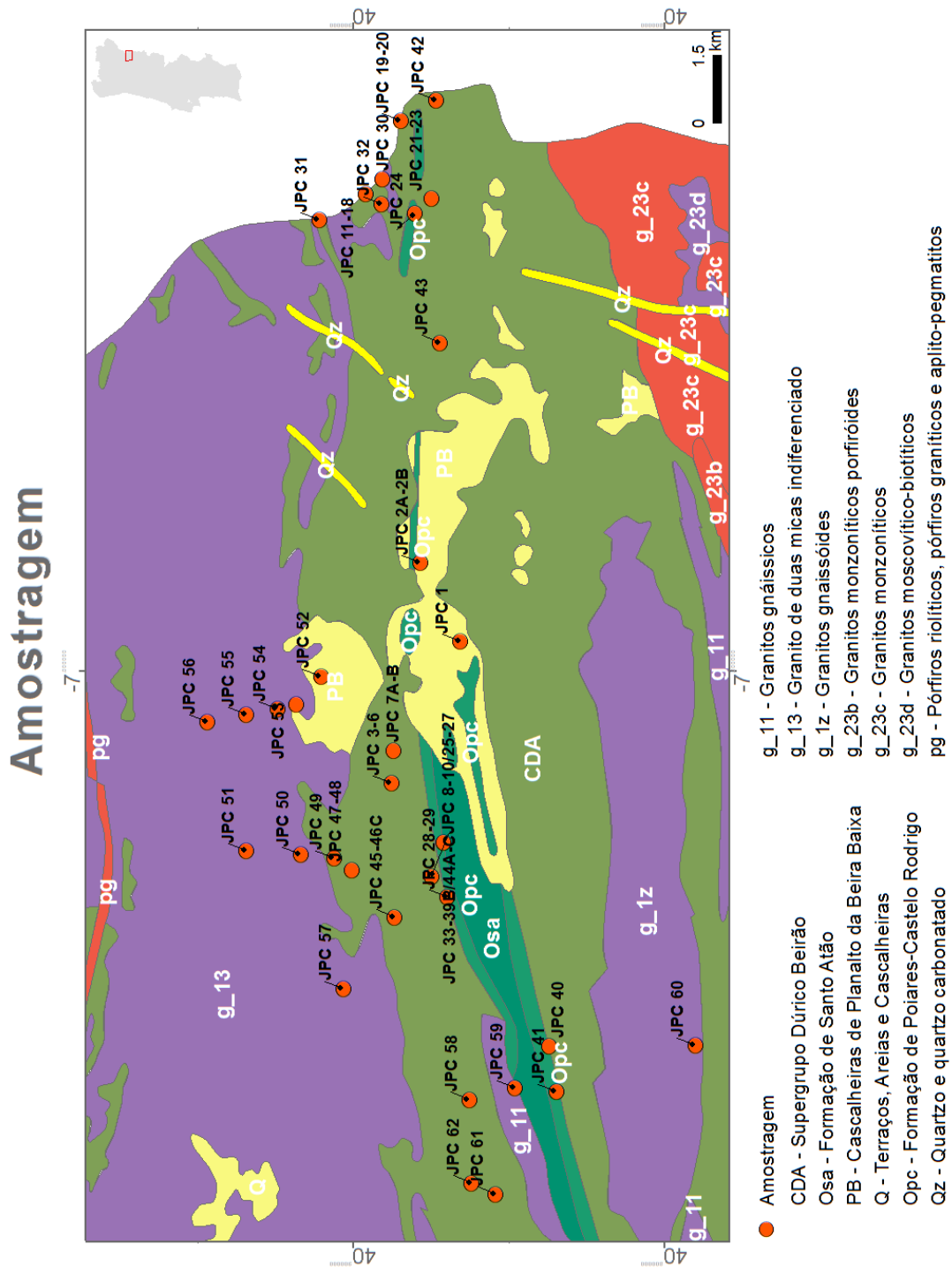


TABELA COM A REFERÊNCIA DA AMOSTRAGEM, CLASSIFICAÇÃO DE CAMPO E LOCALIZAÇÃO WGS84.

Referência	Classificação	Latitude	Longitude	Latitude_dd	Longitude_dd	Sistema de Coordenadas
JPC-1	Quartzito deformado	N 40 51' 56"	W 6 59' 26"	40,865556	-6,990556	WGS 84
JPC-2A	Quartzito	N 40 52' 43"	W 6 57' 55"	40,878611	-6,965278	WGS 84
JPC-2B	Quartzito	N 40 52' 43"	W 6 57' 55"	40,878611	-6,965278	WGS 84
JPC-3	Metatexito	N 40 53' 22"	W 7 01' 55"	40,889444	-7,031944	WGS 84
JPC-4	Diatexito	N 40 53' 16"	W 7 02' 10"	40,887778	-7,036111	WGS 84
JPC-5	Calcosilicatada	N 40 53' 16"	W 7 02' 10"	40,887778	-7,036111	WGS 84
JPC-6	Paleossoma	N 40 53' 16"	W 7 02' 10"	40,887778	-7,036111	WGS 84
JPC-7A	Granito 2 micas yIII	N 40 53' 14"	W 7 01' 32"	40,887222	-7,025556	WGS 84
JPC-7B	Diatexito	N 40 53' 14"	W 7 01' 32"	40,887222	-7,025556	WGS 84
JPC-8	Quartzito	N 40 52' 14"	W 7 03' 22"	40,870556	-7,056111	WGS 84
JPC-9	Quartzito	N 40 52' 16"	W 7 03' 14"	40,871111	-7,053889	WGS 84
JPC-10	Quartzito	N 40 52' 16"	W 7 03' 14"	40,871111	-7,053889	WGS 84
JPC-11	Neossoma	N 40 53' 29"	W 6 50' 12"	40,891389	-6,836667	WGS 84
JPC-12	Mesossoma	N 40 53' 29"	W 6 50' 12"	40,891389	-6,836667	WGS 84
JPC-13	Paleossoma	N 40 53' 29"	W 6 50' 12"	40,891389	-6,836667	WGS 84
JPC-14A	Neossoma	N 40 53' 29"	W 6 50' 11"	40,891389	-6,836389	WGS 84
JPC-14B	Paleossoma	N 40 53' 29"	W 6 50' 11"	40,891389	-6,836389	WGS 84
JPC-14C	Diatexito c/ encrave	N 40 53' 29"	W 6 50' 11"	40,891389	-6,836389	WGS 84
JPC-15	Paleossoma	N 40 53' 29"	W 6 50' 11"	40,891389	-6,836389	WGS 84
JPC-16	Neossoma	N 40 53' 29"	W 6 50' 11"	40,891389	-6,836389	WGS 84
JPC-17	Calcosilicatada	N 40 53' 29"	W 6 50' 11"	40,891389	-6,836389	WGS 84
JPC-18	Aplito biotítico	N 40 53' 29"	W 6 50' 10"	40,891389	-6,836111	WGS 84
JPC-19	Leucogranito yIII	N 40 53' 27"	W 6 50' 05"	40,890833	-6,834722	WGS 84
JPC-20	Encrave máfico	N 40 53' 27"	W 6 50' 05"	40,890833	-6,834722	WGS 84
JPC-21	Quartzito	N 40 52' 30"	W 6 50' 54"	40,875	-6,848333	WGS 84
JPC-22	Quartzito filítico	N 40 52' 30"	W 6 50' 54"	40,875	-6,848333	WGS 84

JPC-23	Filito – quartzítico	N 40 52' 30''	W 6 50' 54''	40,875	-6,848333	WGS 84
JPC-24	Granito yIII	N 40 52' 53''	W 6 51' 08''	40,881389	-6,852222	WGS 84
JPC-40	Quartzito	N 40.83715	W 7.12042	40,83715	-7,12042	WGS84
JPC-41	Quartzito	N 40.83480	W 7.13503	40,8348	-7,13503	WGS84
JPC-42	Quartzito	N 40.87334	W 6.81675	40,87334	-6,81675	WGS84
JPC-43	Conglomerado?	N 40.87217	W 6.89454	40,87217	-6,89454	WGS84
JPC-44A	Metatexito	N 40.87529	W 7.06752	40,87529	-7,06752	WGS84
JPC-44B	Metatexito	N 40.87529	W 7.06752	40,87529	-7,06752	WGS84
JPC-44C	Metatexito	N 40.87529	W 7.06752	40,87529	-7,06752	WGS84
JPC-45	Diatexito	N 40.88590	W 1.07911	40,8859	-7,07911	WGS84
JPC-46A	Metatexito	N 40.88682	W 7.07901	40,88682	-7,07901	WGS84
JPC-46B	Metatexito	N 40.88682	W 7.07901	40,88682	-7,07901	WGS84
JPC-46C	Metatexito	N 40.88682	W 7.07901	40,88682	-7,07901	WGS84
JPC-47	Metatexito	N 40.90040	W 7.06385	40,9004	-7,06385	WGS84
JPC-48	Diatexito	N 40.90040	W 7.06385	40,9004	-7,06385	WGS84
JPC-49	Granito yX	N 40.90624	W 7.06008	40,90624	-7,06008	WGS84
JPC-50	Granito yVIII	N 40.91701	W 7.05900	40,91701	-7,059	WGS84
JPC-51	Granito yIX	N 40.93438	W 7.05781	40,93438	-7,05781	WGS84
JPC-52	Granito yIX	N 40.91042	W 7.00177	40,91042	-7,00177	WGS84
JPC-53	Granito Yix	N 40.91848	W 7.01056	40,91848	-7,01056	WGS84
JPC-54	Granito yIII	N 40.92446	W 7.01229	40,92446	-7,01229	WGS84
JPC-55	Granito yV	N 40.93442	W 7.01407	40,93442	-7,01407	WGS84
JPC-56	Granito yX	N 40.94691	W 7.01641	40,94691	-7,01641	WGS84
JPC-57	Granito yX	N 40.90333	W 7.10198	40,90333	-7,10198	WGS84
JPC-58	Metatexito	N 40.86281	W 7.13764	40,86281	-7,13764	WGS84
JPC-59	Granito yII	N 40.84805	W 7.13390	40,84805	-7,1339	WGS84
JPC-60	Granito yIV	N 40.79016	W 7.12020	40,79016	-7,1202	WGS84
JPC-61	Metatexito	N 40.85427	W 7.16800	40,85427	-7,168	WGS84
JPC-62	Metatexito	N 40.86205	W 7.16441	40,86205	-7,16441	WGS84