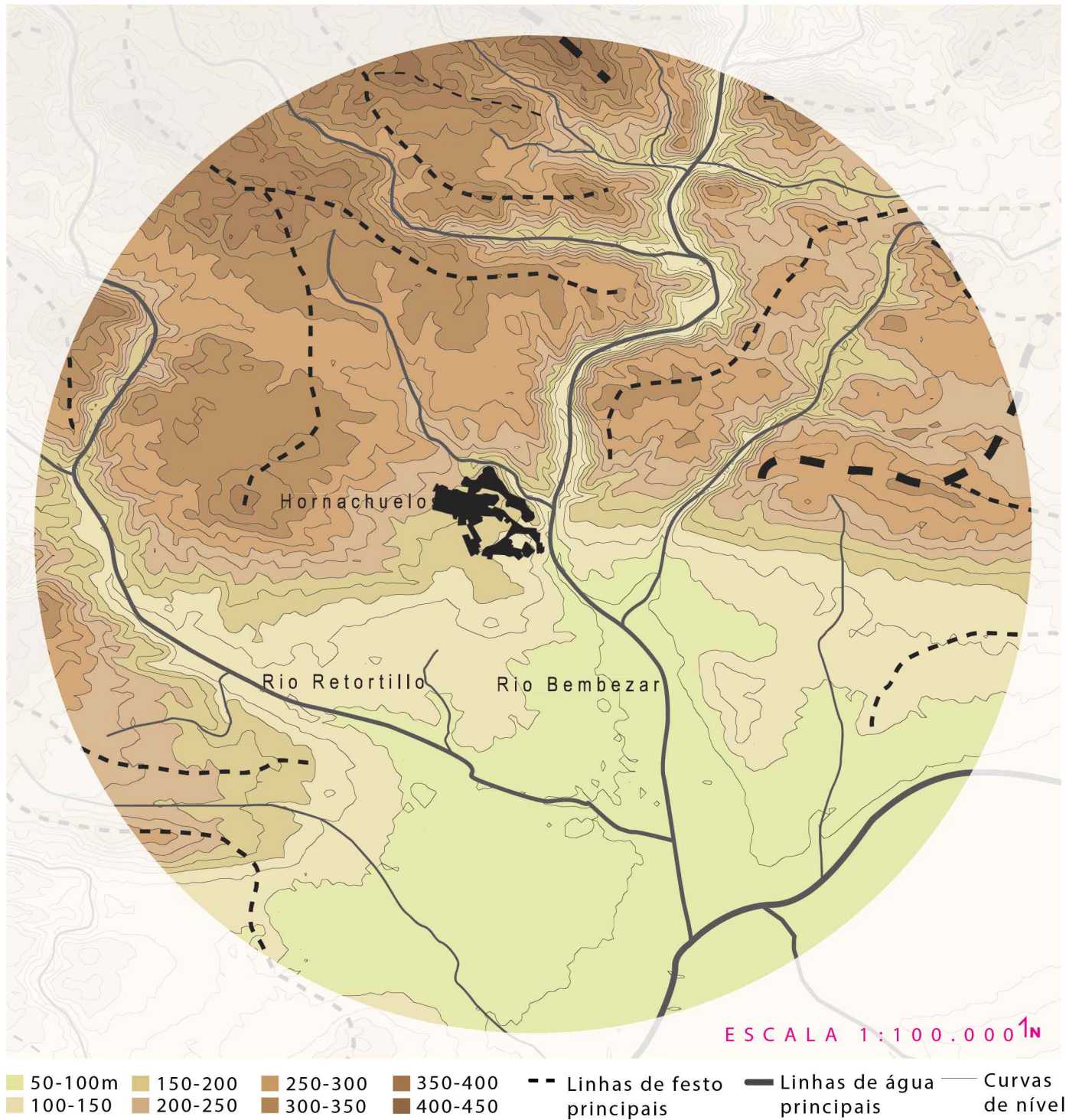


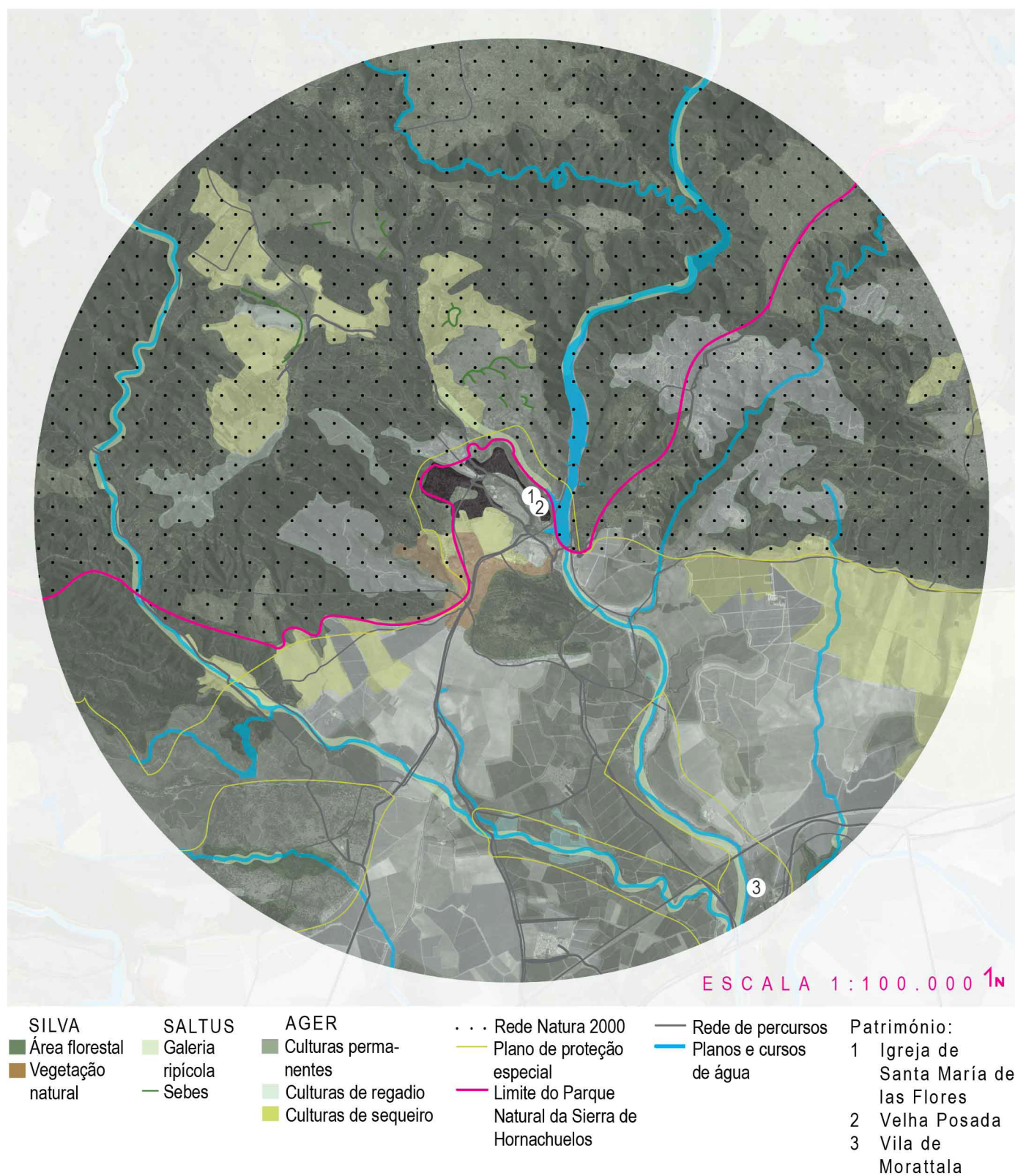
# Anexo 2



## Síntese do Fisiográfica

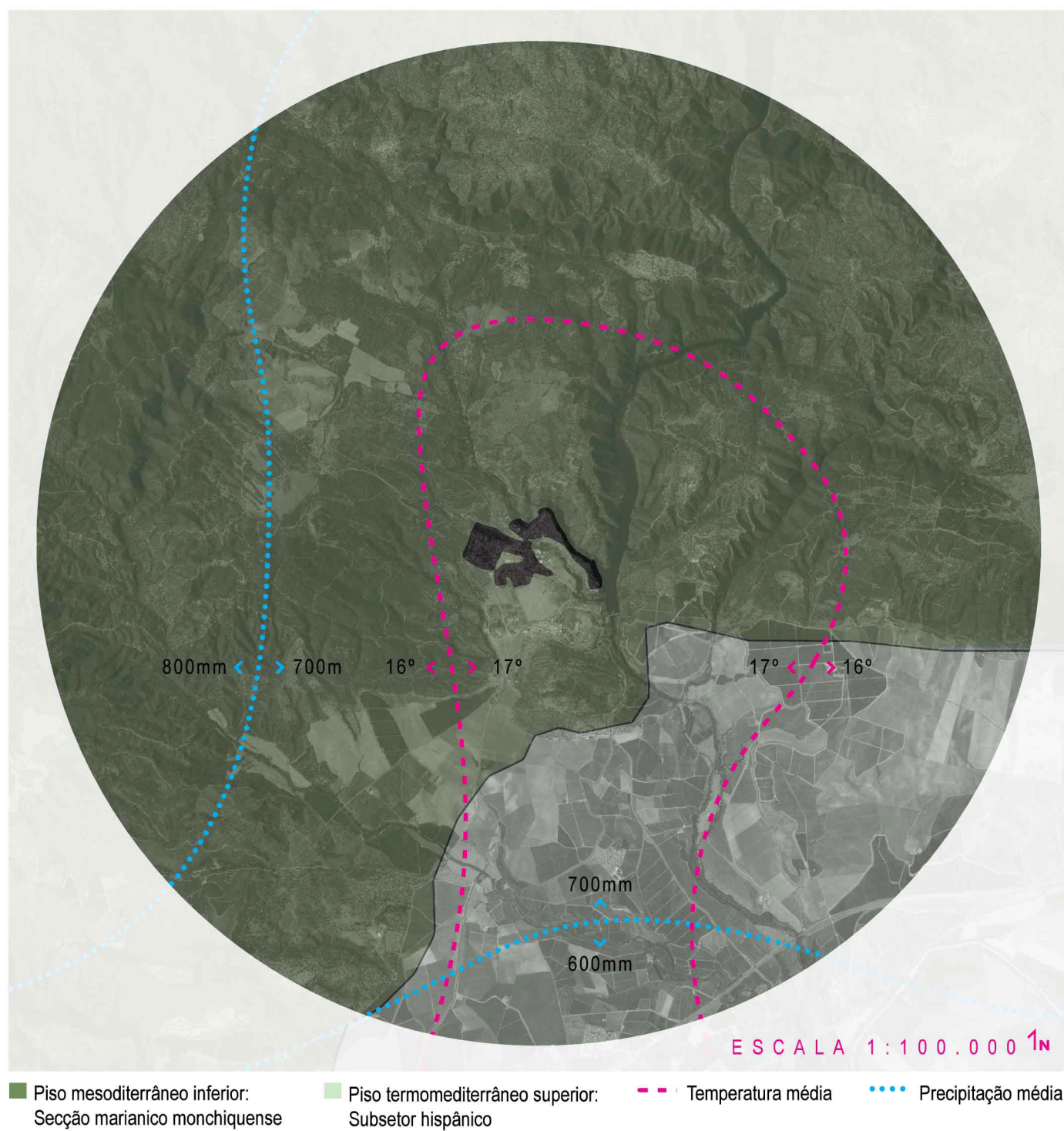


## Uso do Solo

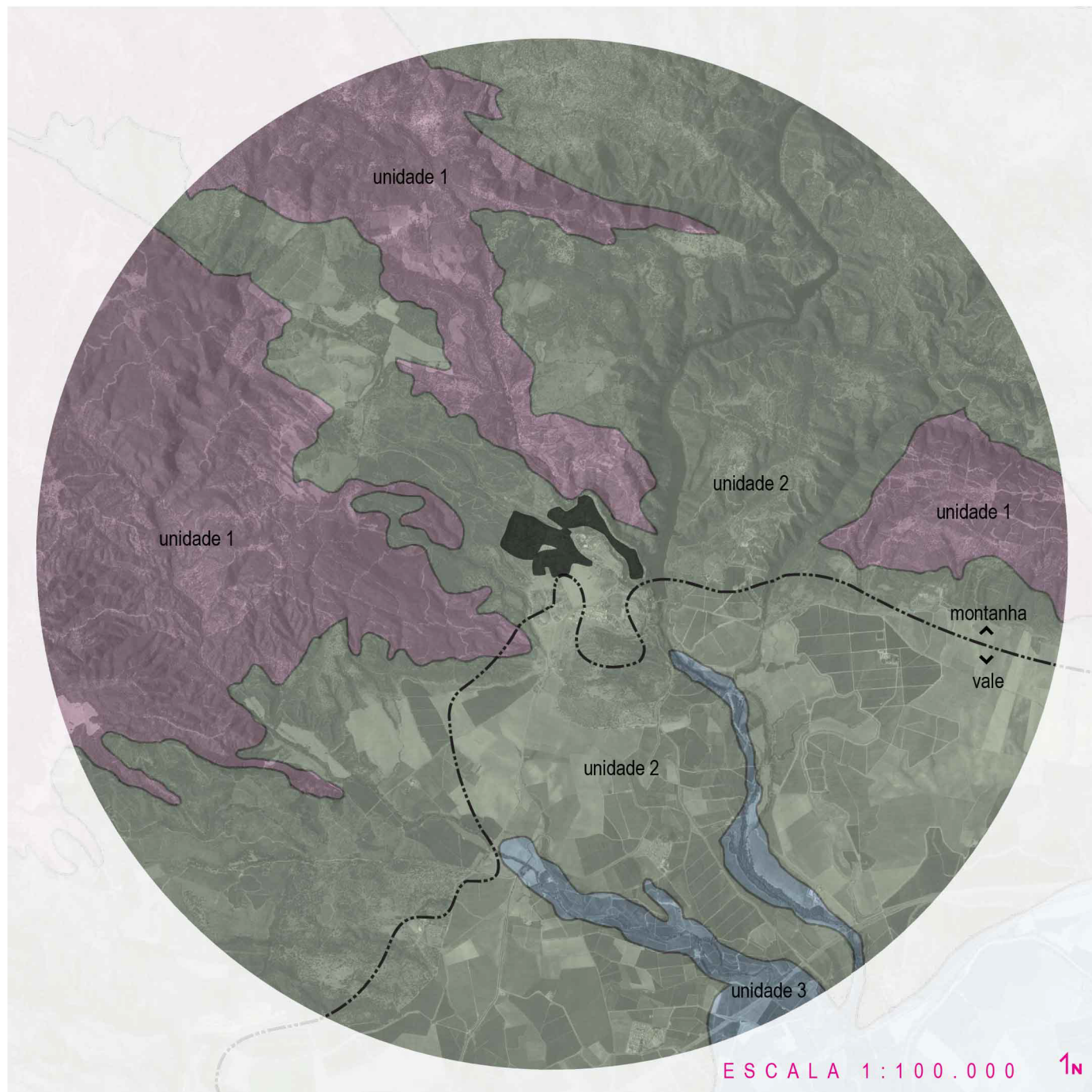




## Unidades Biogeográficas



## Unidades de Paisagem



■ Sierra Morena Ocidental:  
Serranias de baixa montanha

■ Piedmonte Sierra Morena:  
Campinas de piedmonte

■ Planícies do Guadalquivir :  
Vales, planícies e pântanos

--- Limite entre montanha  
e vale



IN ORDER TO BRING IN THE FRESHNESS, THE AMENITY AND THE IDENTITY OF THIS LANDSCAPE, IT IS NECESSARY TO **EXTEND THE ECOLOGICAL STRUCTURE INSIDE THE TOWN WALLS**, CREATING **GREEN CORRIDORS** THAT TAKE ADVANTAGE OF THE **GREAT POTENTIAL OF VOID SPACES**. THIS STRUCTURE WILL BE THE FOUNDATION FOR THIS NEW SENSE OF COMMUNITY AND COLLECTIVE, BRINGING PEOPLE TOGETHER IN THE TOWN OPEN SPACES AND POWERING THE TRANSFORMATION THAT HORNACHUELOS DESERVES.

The diagram consists of three main components arranged vertically, each with a corresponding icon to its left:

- Top Component:** A light blue cloud-like shape. To its left is a series of five small, light blue circles connected by a horizontal line.
- Middle Component:** A green rectangular shape. To its left is a series of five small, green circles connected by a horizontal line.
- Bottom Component:** A pink triangular shape. To its left is a series of five small, pink circles connected by a horizontal line.

Each component has a text label to its right:

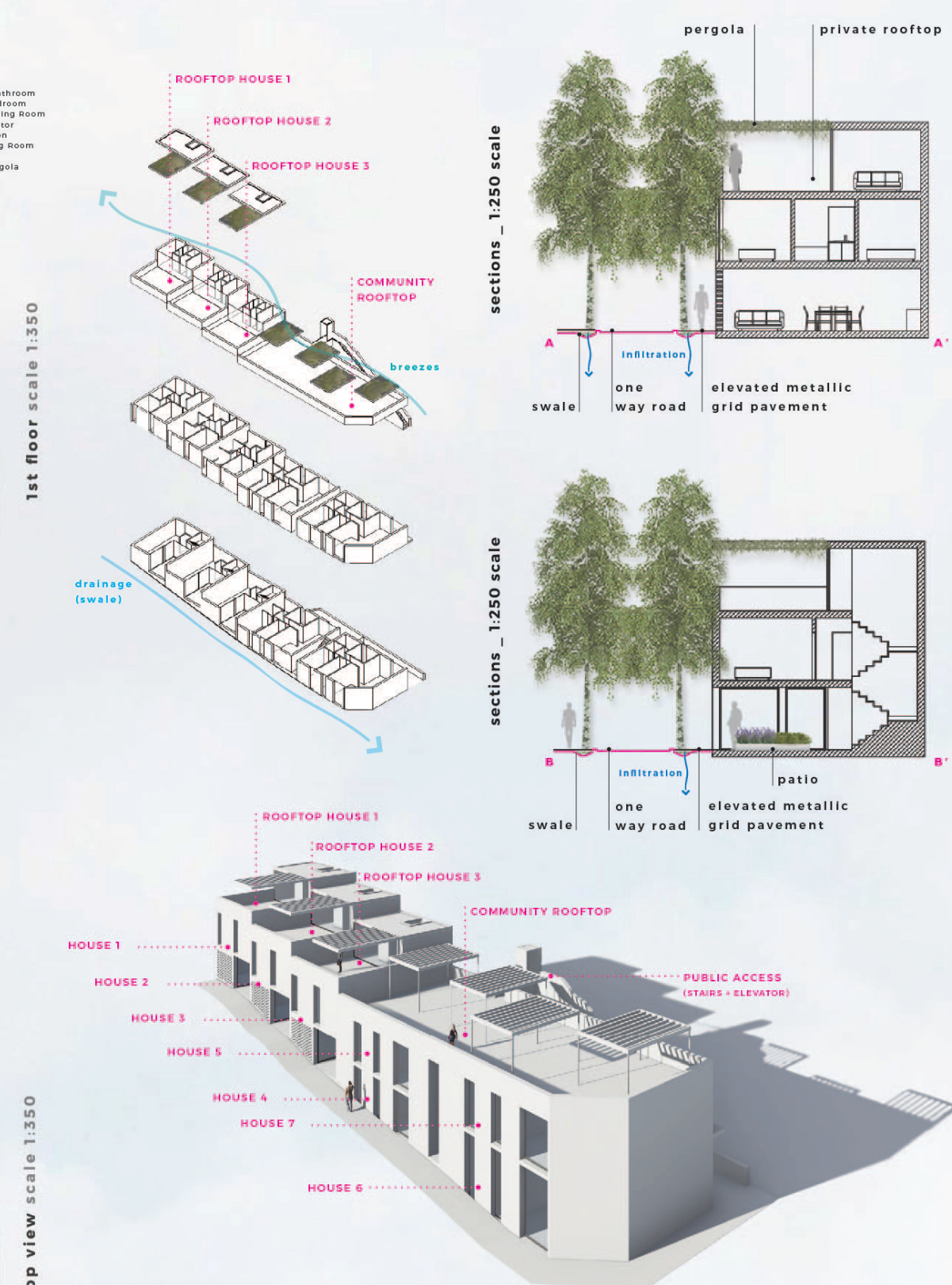
- Top Component:** "Main ecological structure proposed inside town" (left) and "Main ecological connectivity/corridor achieved with the partial interventions proposed" (right).
- Middle Component:** "Main connection points between the town and the surrounding ecological structure" (left) and "Main ecological connectivity/corridor to achieve with the implementation of the ecological structure guidelines" (right).
- Bottom Component:** "Main viewpoints from the intervention" (left) and "Main viewpoints from the intervention" (right).

 $1_N$ 

## PROPOSAL MATERIALITIES

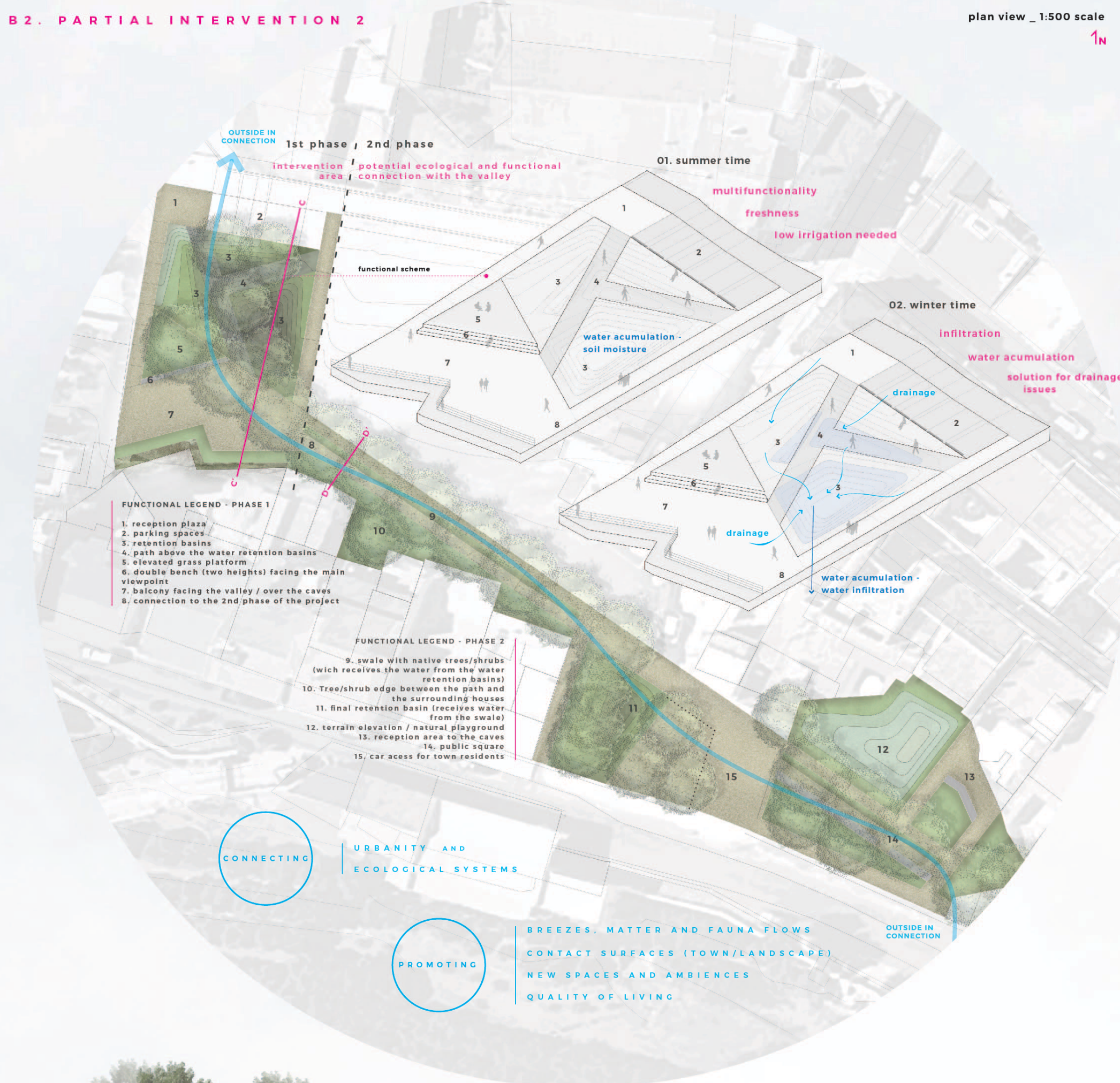


## B1. PARTIAL INTERVENTION 1

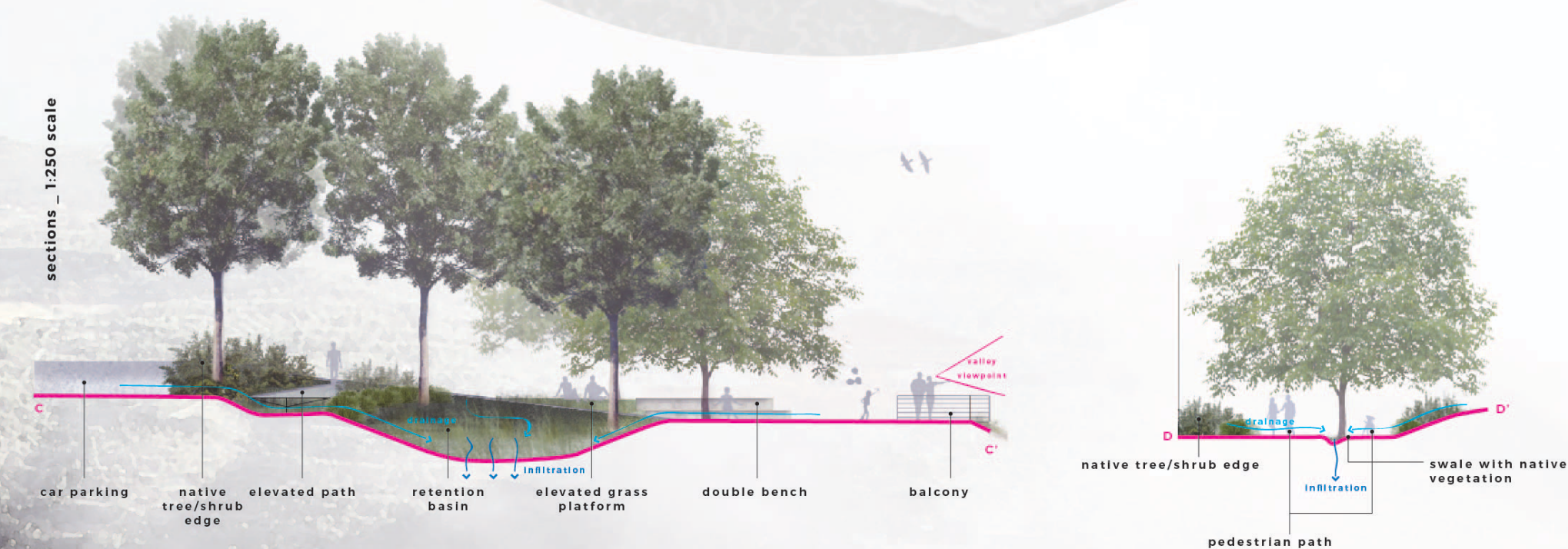


THE INTERVENTION AREA WILL BE THE ENGINE FOR THESE TRANSFORMATIONS, SETTING THE **EXAMPLE BOTH FOR HOUSING AND URBAN SPACE**. THE PARTIAL INTERVENTION IN THE AREA OF THE **STATION** USES HORNACHUELOS' IDENTITY AS INSPIRATION, CREATING **QUALITY HOUSING AND COMMUNITY ROOFTOPS** THAT POTENTIATE THE ECOLOGICAL STRUCTURE WITH A SYSTEM OF PLANTED SWALES (AT STREET LEVEL) AND GREEN PERGOLAS (ROOFTOP LEVEL).

## B2. PARTIAL INTERVENTION 2



BREEZES, MATTER AND FAUNA FLOWS  
CONTACT SURFACES (TOWN/LANDSCAPE)  
NEW SPACES AND AMBIENCES  
QUALITY OF LIVING



THE PARTIAL INTERVENTION 2 IS DIVIDED INTO TWO PHASES. IN THE FIRST PHASE WE PROPOSE TO TAKE ADVANTAGE OF THE NATURAL RELIEF AND USE TERRAIN MODELLING TO CREATE **MULTIFUNCTIONAL BASINS**. THIS PEDESTRIAN AREA LEADS TO A BALCONY FACING A GREAT VIEW OF THE SURROUNDINGS. THE SECOND PHASE PROVIDES A **FUNCTIONAL AND ECOLOGICAL CONNECTION WITH THE VALLEY**, WHERE THE WATER PATH WAS THE MAIN DESIGN TOOL. MATERIALIZING ONE OF THE SEVERAL POTENTIAL CONNECTIONS PRESENTED.

THE LANDSCAPE SYSTEM WILL SURVIVE AND PERSEVERE WITH CONNECTION,  
CONTINUITY AND COMMUNITY INVOLVEMENT.