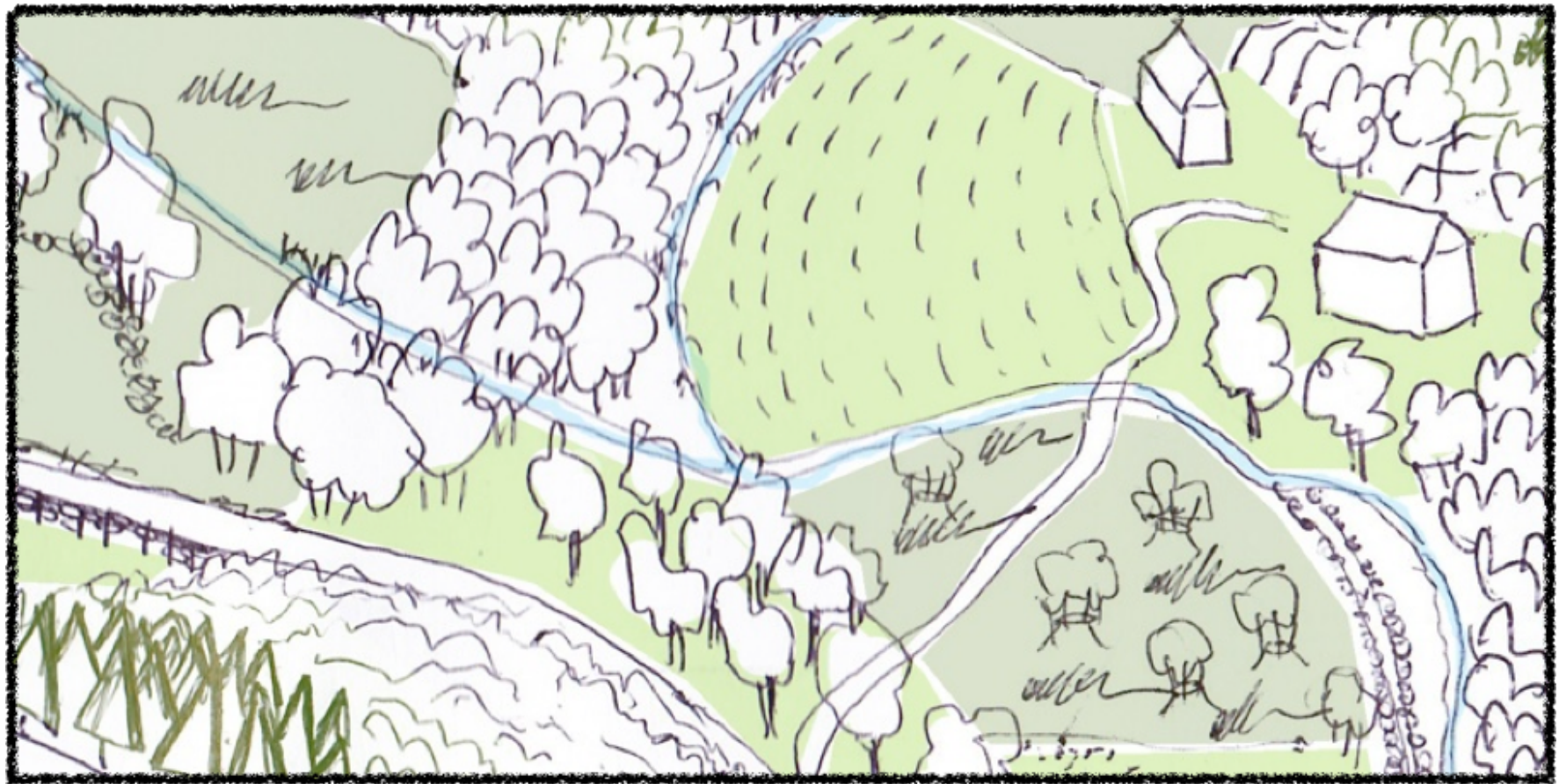




Are the land managers behaviors out of step with their attitudes?
A Multifunctionality transition typology bounded by post-productivist & productivist action & thought.

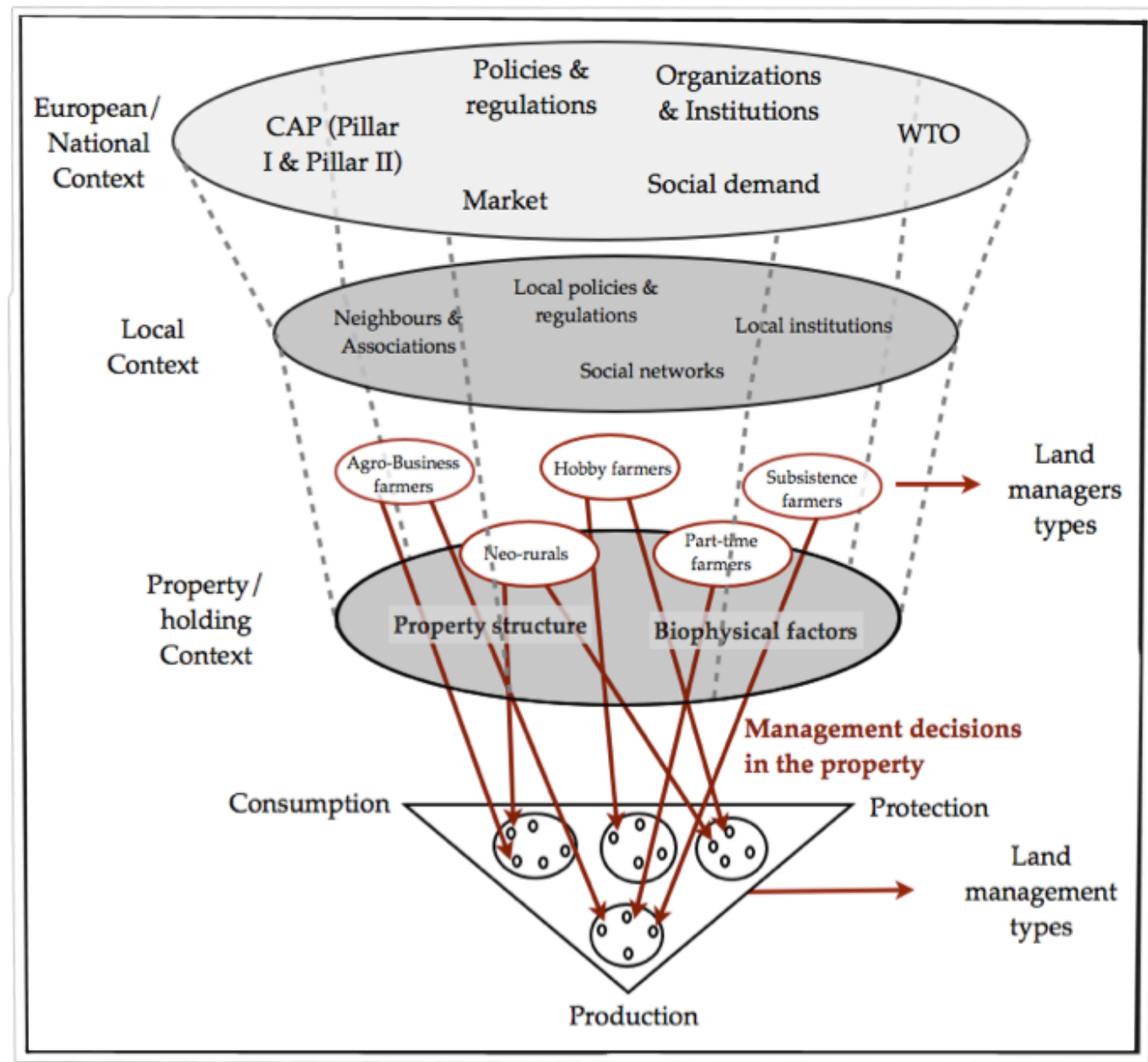
Filipe Barroso, Teresa Pinto-Correia, Isabel Rodrigo, Helena Menezes, Daniela Costa



Framework

New ways of land management arise, made not just by those normally considered farmers, but by a multitude of other land managers

Many of these strategies can coexist, reflecting differences in the balance between production, consumption and conservation.



Objectives

- Identify a typology of land managers with focus on the transition pathways
- Test a group of indicators to classify the different land managers and management types on a multifunctional spectrum, from productivist to post-productivist oriented.
- Understand land managers strategies, regarding their management/action (behavior) but also their motivations/though (attitude)

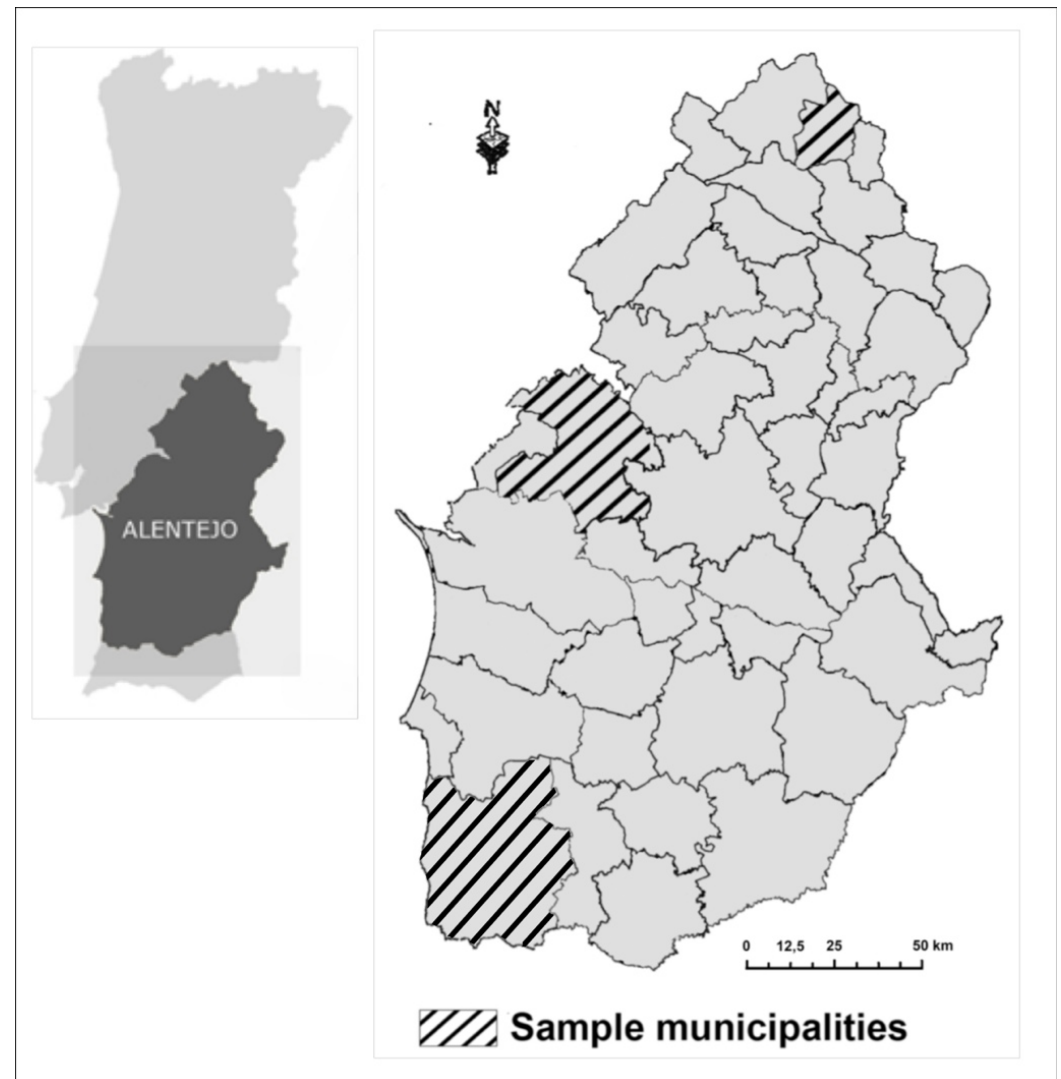




Sample Methodology

Sample Municipalities

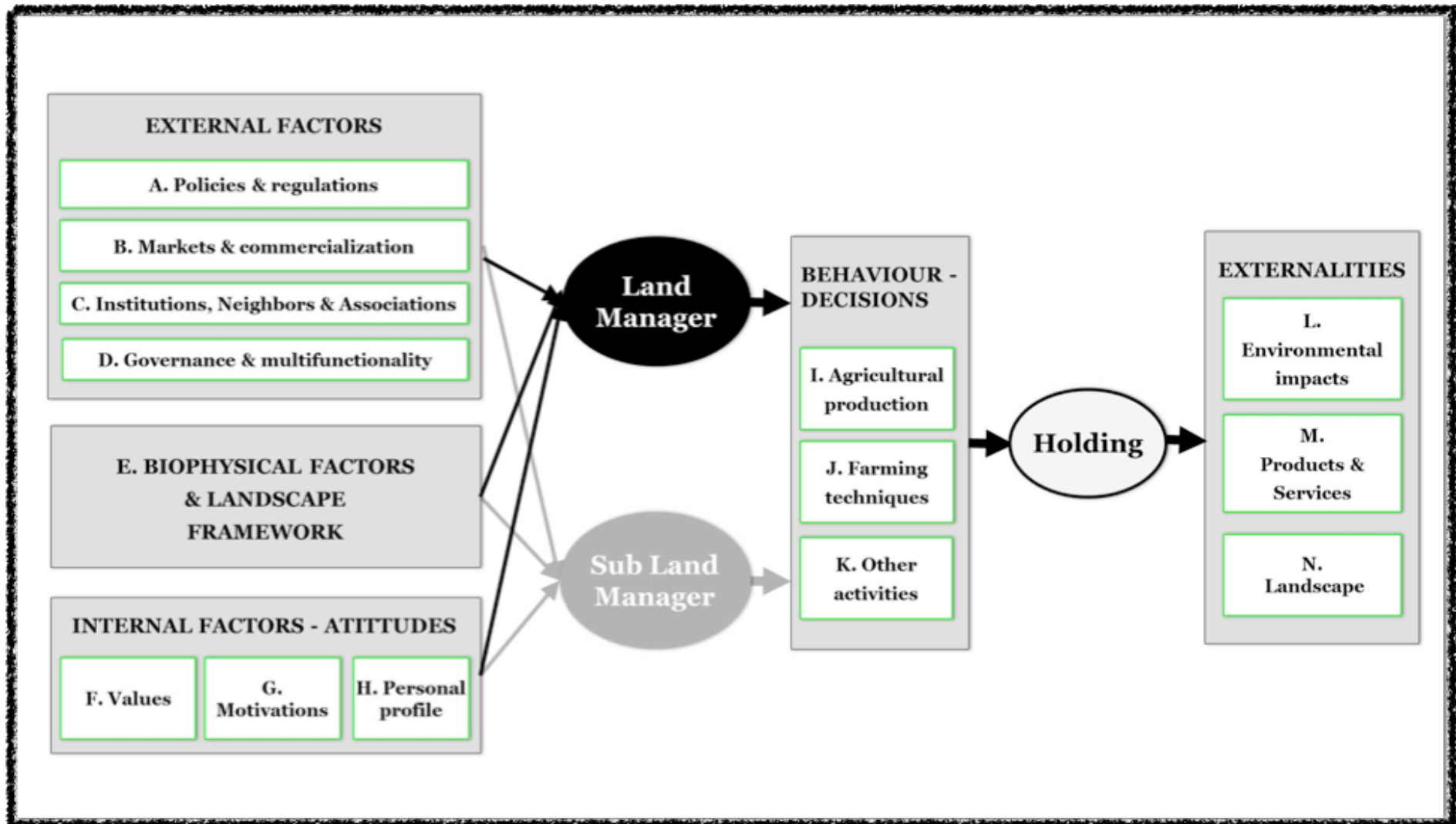
Nº of holdings sampled per municipality				
Municipalities	Total	0-5 ha	5-50 ha	> 50 ha
Castelo de Vide	45	17	13	15
Odemira	209	51	84	74
Montemor-o-Novo	119	40	28	51
Total	373	108	125	140





Questionnaire Methodology

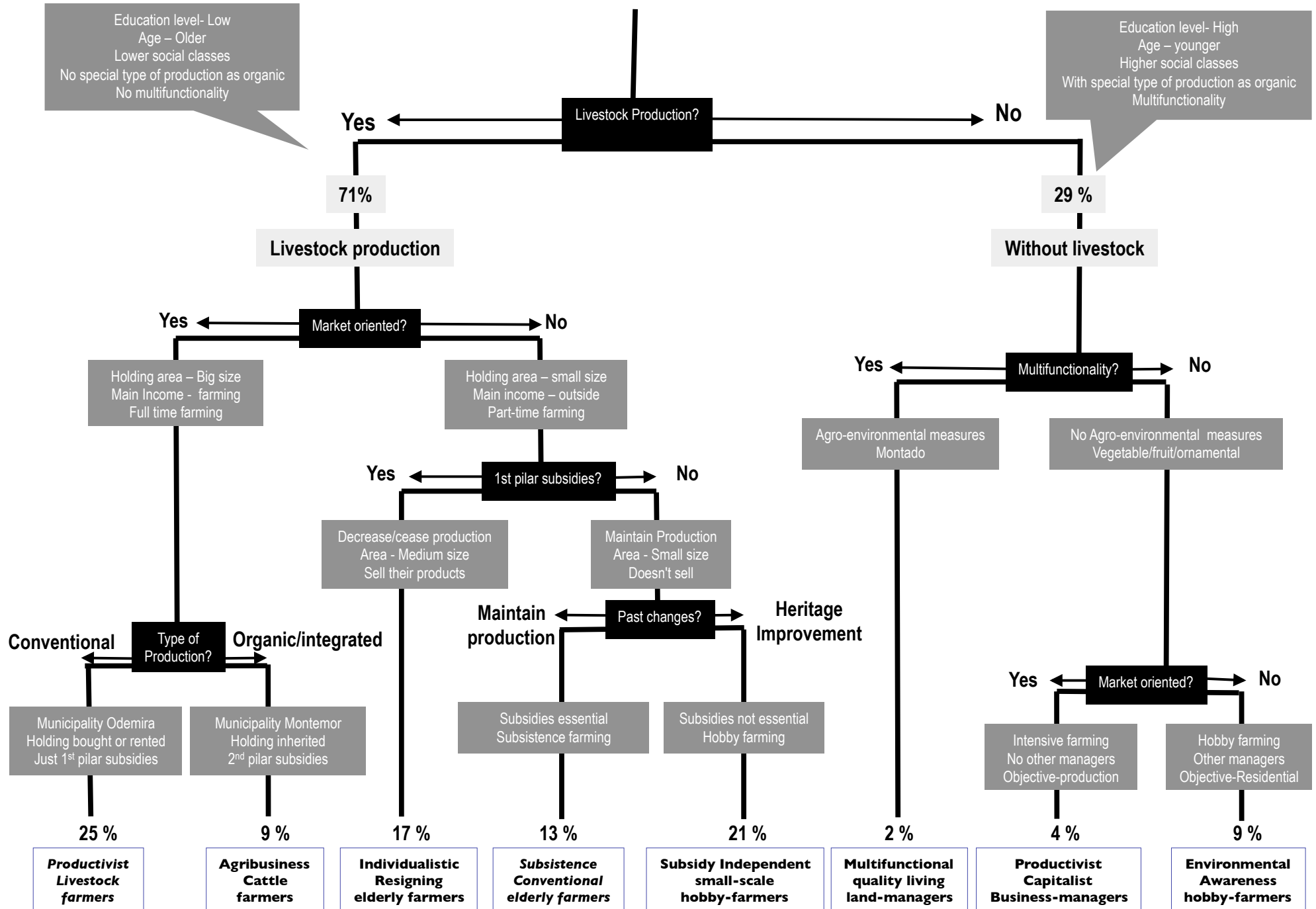
Questionnaire - Topics to consider



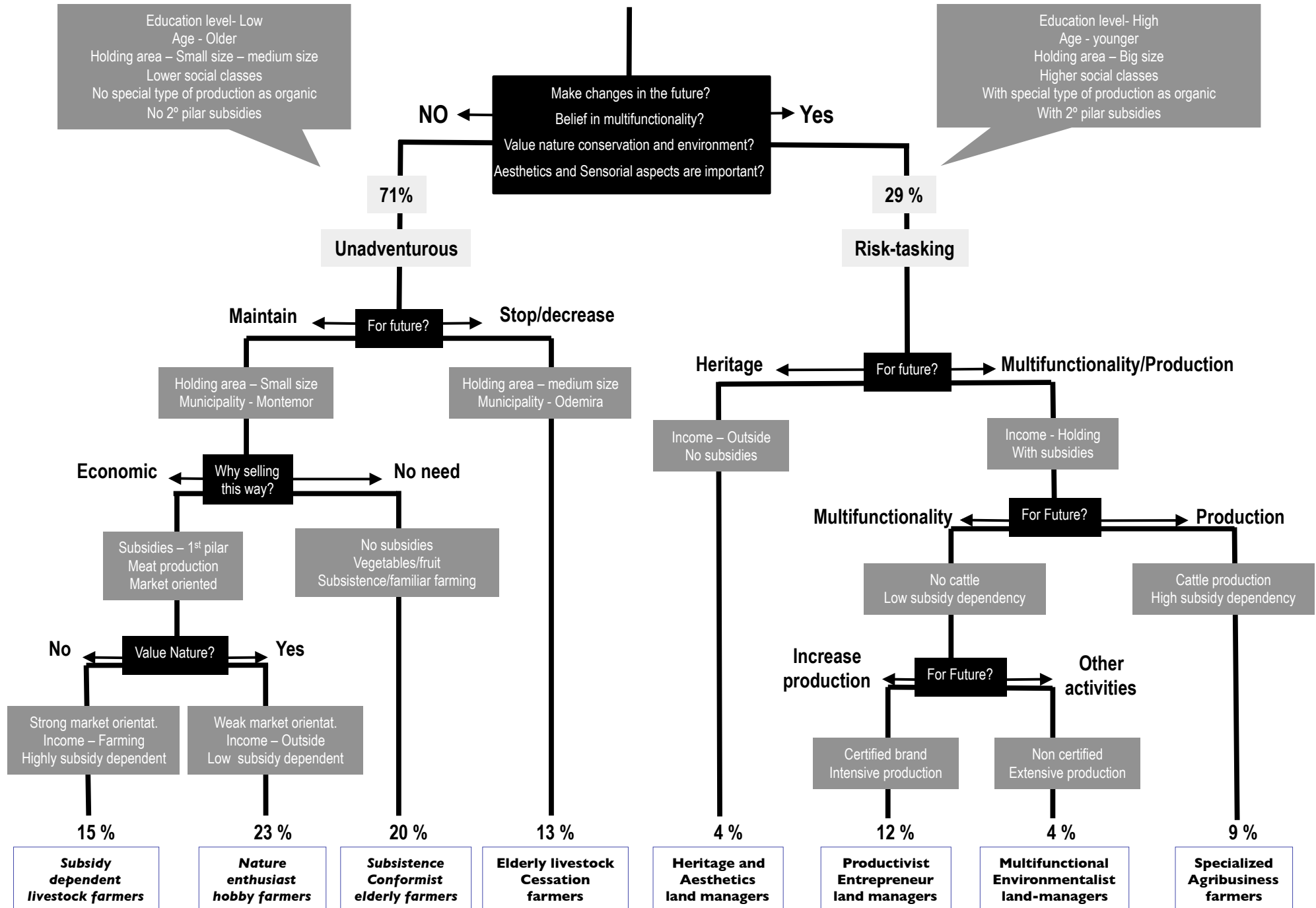


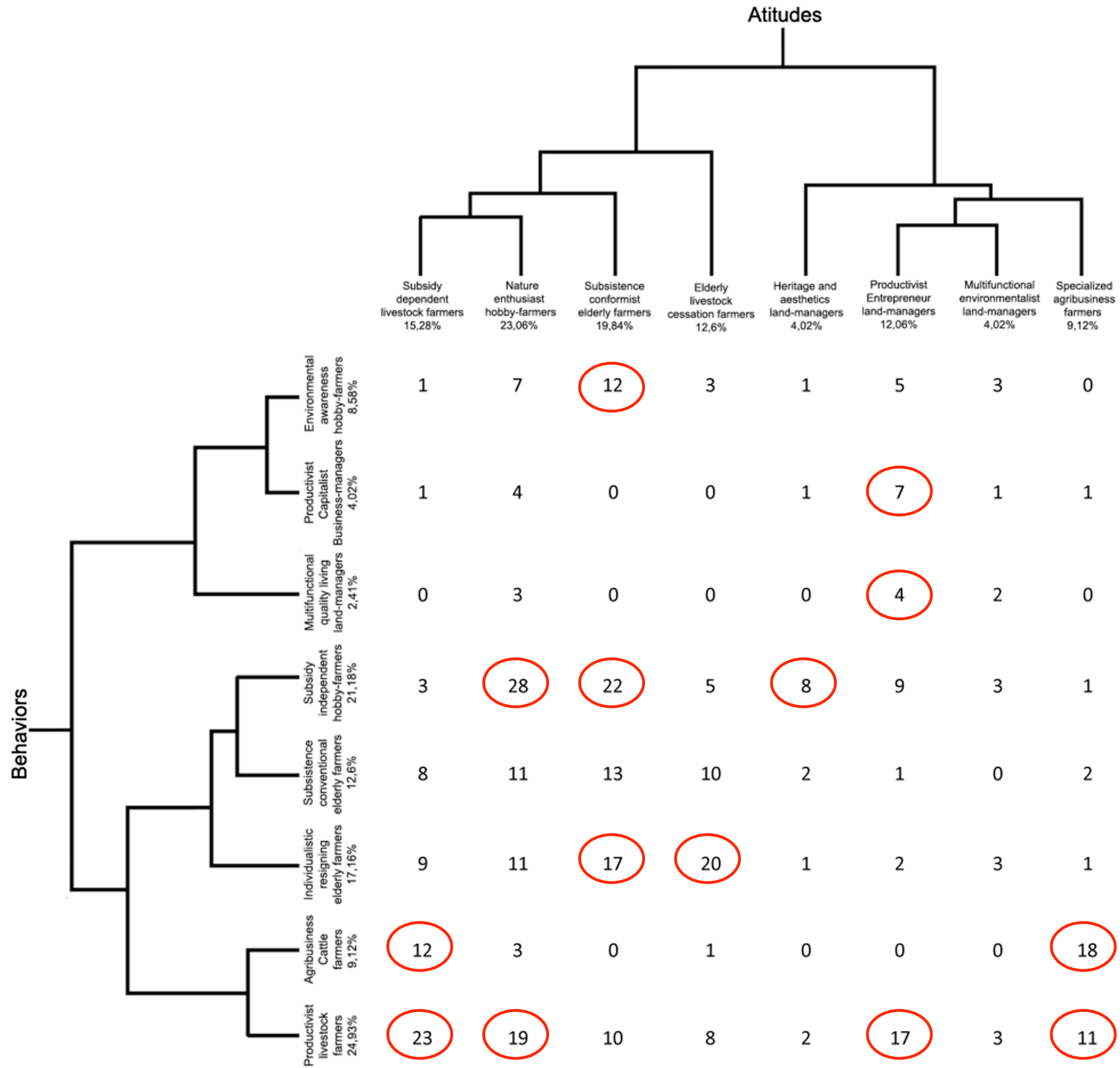
Results

373 questionnaires – 100% ➔ Typology: Behaviours

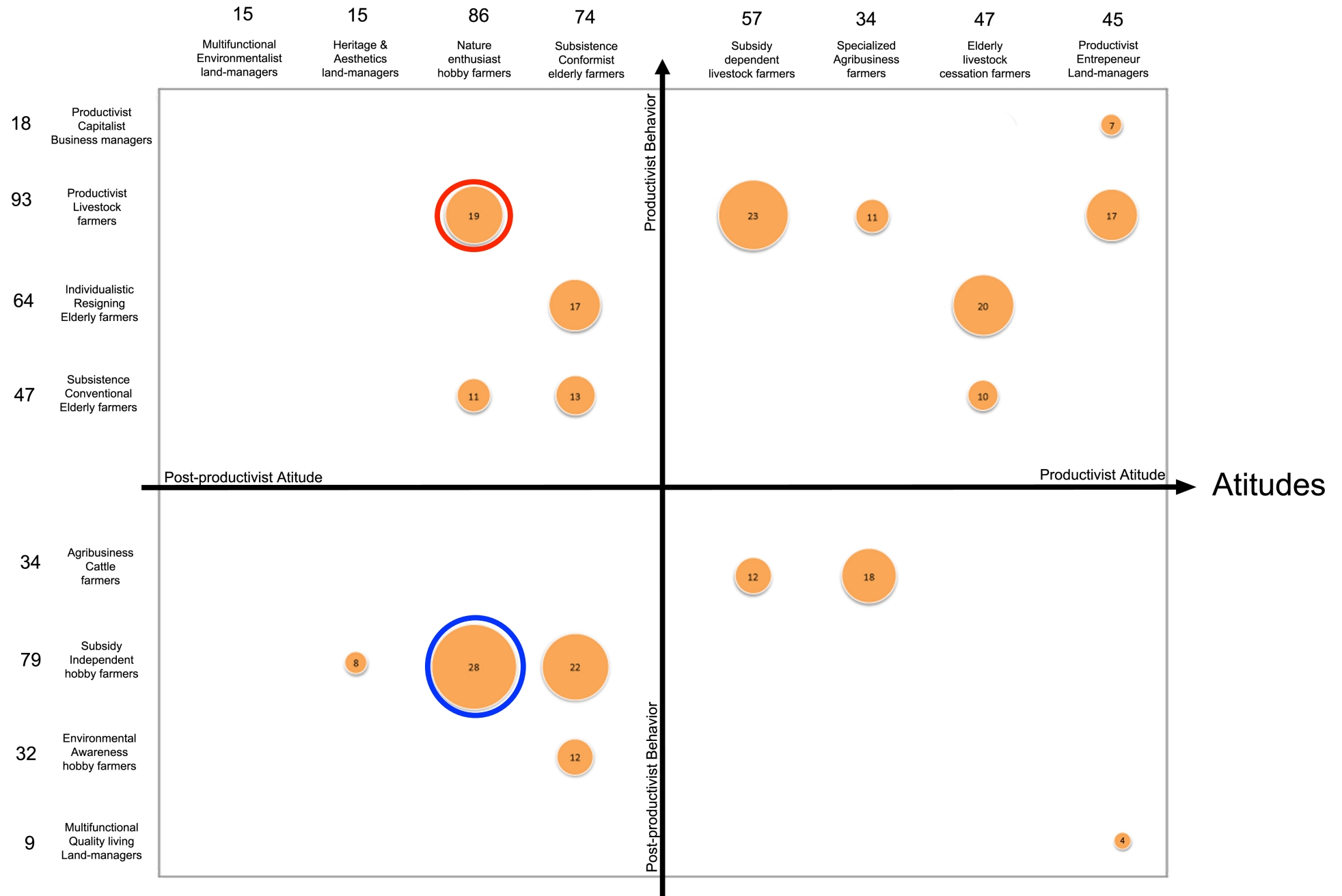


373 questionnaires – 100% ➔ Typology: Attitudes

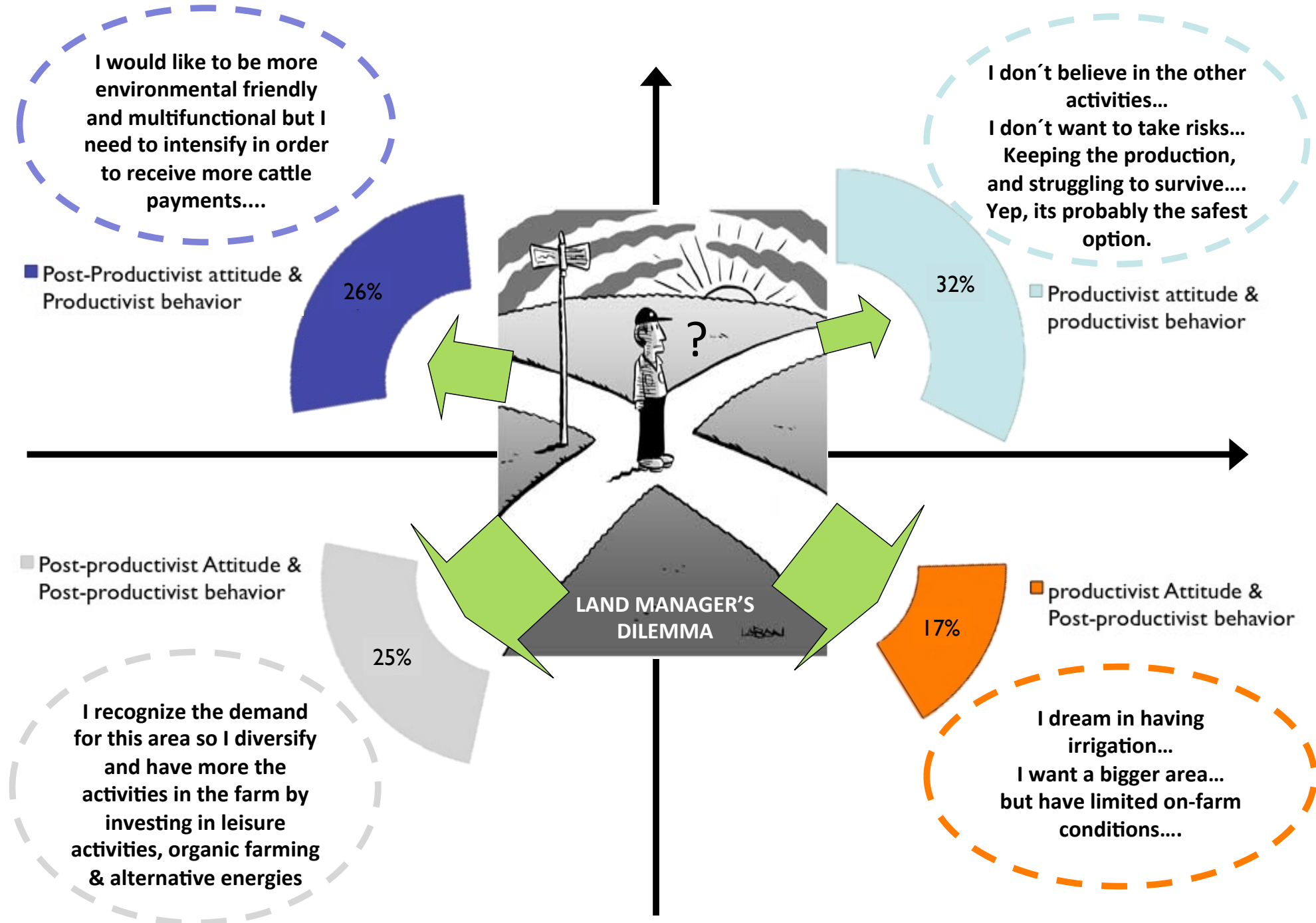




Behaviors



post-productivism & productivism Attitudes And Behaviors





conclusions

Conclusion

- **Many complex profiles** emerge, which differ from each other and from the most common farmer definition >> new and multiple types of actors in land management
- There is a **conflict between the behaviours and the attitudes** in a large number of land managers >> tensions in land management options and uncertainty for the future strategies
- **Innovation** in land management **not supported** by public policies >> The **differentiation is not considered**
- Is not given enough attention to a big number **of small scale land managers** as the subsistence or hobby farmers farmers, but they **play a very important role** in rural areas.
- The **production ideal** continues to have a big influence in this areas
- There is a **need** to work more comprehensively with land managers for a **broader understanding of their options**,



Thank you
Obrigado